

# Human Impact on Earth

## Picture Vocabulary

7.E 6.6 Human Impact on Earth

# Deforestation



The clearing of trees in the area

# Urbanization



The process by which cities grow and develop

# Desertification



The rapid depletion of plant life and the loss of topsoil caused by a combination of drought and the overexploitation of grasses and other vegetation by people

# Erosion



The process by which water, ice, wind, and gravity remove and transport sediments from one place to another

# Water Quality



A measure of the condition of water relative to the environment

# Air Quality



A measure of the amount of pollution in the air;  
the higher the air quality, the lower the air  
pollution

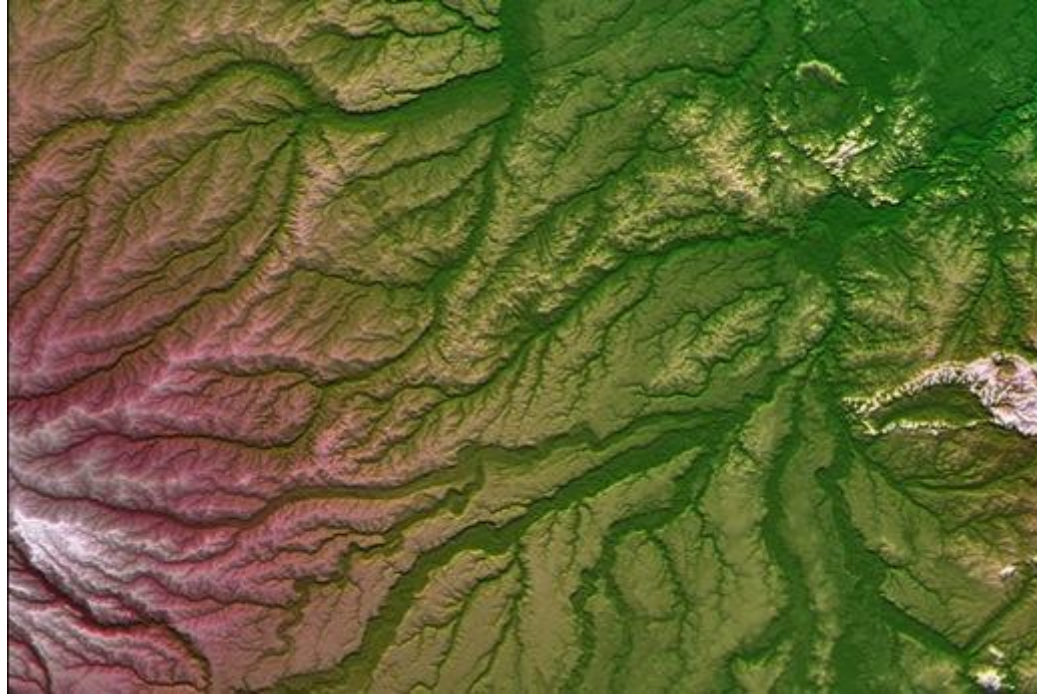
# Acid Rain



Rain with a decreased pH that can cause harm to plants, animals, and built structures



# Watershed



An area of land where the surface water and groundwater drain into a particular body of water; separated from other watersheds by drainage divides